

LED-9-PAP



led 9x6in1 IP65 battery powered wireless DMX par 6in1 RGBWA

UV wireless DMX battery par light with Smart phone control

Please read over this manual before operating the light

Most important: FIRST CHARGE THE FIXTURES FOR 6-8 Hours on the First Charge before use. Plug in Power cord. Turn off Power Switch and Turn off other switch to

charge.

Introduction

Unpacking: Thank you for purchasing this product, all products has been thoroughly tested and has been shipped in perfect operating condition. Carefully check the shipping carton for damage that may have occurred during shipping. If the carton appears to be damaged, carefully inspect your fixture for any damage and be sure all accessories necessary to operate the unit has arrived intact. In the case damage has been found or parts are missing, please contact the manufacturer or your dealer for further instructions. Do not return this unit to your dealer without first contacting.

Introduction: The Light is a DMX intelligent and battery powered LED par light. This par light is light weight and compact which makes it a great piece for mobile DJ"s and clubs.

Warning! To prevent or reduce the risk of electrical shock or fire, do not expose this unit to rain or moisture.

Caution! There are no user serviceable parts inside this unit. Do not attempt any repairs yourself; doing so will void your manufactures warranty. In the unlikely event your unit may require service please contact the manufacturer or your dealer.

PLEASE recycle the shipping carton whenever possible.

General Instructions

To optimize the performance of this product, please read these operating instructions carefully to familiarize you with the basic operations of this unit. These instructions contain important safety information regarding the use and maintenance of this unit. Please keep this manual with the unit, for future reference.

Notice :please pay attention to ventilation, to prevent the battery overheat cause burning When charging.



1. Notes

Please carefully read the instructions, it contains assembly, operation, maintenance and other important information.

Circuit board may not overlap pile, please put gently, not abandonment, to prevent deformation of the circuit board, component damage, pads off and other adverse conditions.

Power input range between 12-36V, different light board power input will vary, please counsel before use, avoid the use of improper power supply or motherboard situation

burned lamp beads, resulting in unnecessary economic losses. Do not reverse the anode and cathode power supply.

It should take PCB board when assemble and install, do not covet convenience of lifting and operating for a part, to avoid pad off or damage as stress.

All terminals should be connected correctly and according to process requirements. Pay attention to distinguish the direction and polarity

Try not to plug any electrical or cable to operate, to avoid short circuit or component damage.

Try to make anti-static treatment.

Operating errors or other man-made defects or burned are not within the scope of return, need to charge repair costs of corresponding elements.

2. Product Features

DMX512 console control, can be controlled via signal cable and 2.4G wireless DMX signal

Master-slave control is available online via the signal line or 2.4G wireless

WiFi phone operation control, support Android 2.3 or later, Apple iOS 4.3 or later (This feature applies to WiFi motherboard)

Phone APP Name: LED WIFI (Language: software automatically recognizes the Chinese or English according to the system)

Static color choices (6 colors, dimming 0-255) + strobe function (speed adjustable 0-20)

Macro Color: 32 colors available

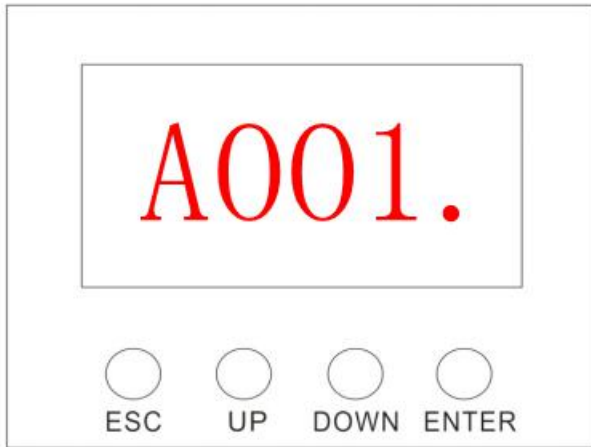
Color automatically change function (Speed 1-20)

Color gradually change function (Speed 1-20)

Color Suddenly change function (Speed 1-20)

Strobe with red background, strobe with a green background, strobe with blue background, Strobe with a yellow background (Speed 1-20)

— OPERATING INSTRUCTIONS...SKEMATIC DIAGRA



[ESC]:	MENU
[UP]:	+
[DOWN]:	-
[ENTER]:	CONFIRM

—、 Display Function:

Display Mode	Function
A001 (A001—A512)	10 Channel
d001 (d001—d512)	6 Channel
CL01 (CL01—CL32)	Mixing color mode (32 mode)
CC99 (CC01—CC99)	Change color mode
EE99 (EE01—EE99)	Gradient model
FF99 (FF01—FF99)	Catastrophe mode
ST99 (ST01—ST99)	Strobe
SE60 (SE01—SE99)	Sound control sensitivity adjustable
SOU1 (SOU1/2/3)	Sound Mode SOU1 change color SOU2 color strobe SOU3 Catastrophe change color
LED (ON/OFF)	LED (ON/OFF)
IRCL (ON/OFF)	IRCL (ON/OFF)
2.4G (ON/OFF)	2.4G (ON/OFF)
T 00 (00)	Light panel temperature display
TEST (R/G/B/W/Y/P/RGBWYP)	Self-examination function
R255 (R000—R255)	R Manual dimming
G255 (G000—G255)	G Manual dimming
B255 (B000—B255)	B Manual dimming
W255 (W000—W255)	W Manual dimming
Y255 (Y000—Y255)	Y Manual dimming
P255 (P000—P255)	P Manual dimming

二、DMX Channel Function:

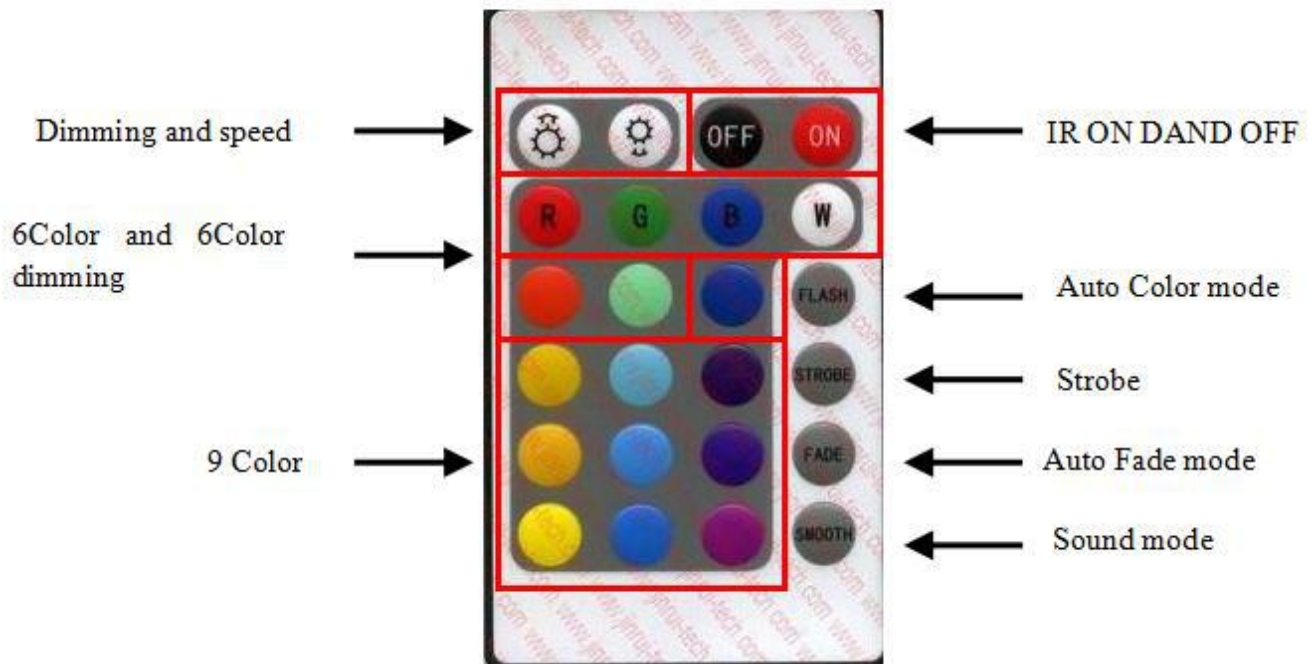
Channel	6 channel mode	10 channel mode
CH1	0 off, 1-255 Red dimmer	0 off, 1-255 total dimmer
CH2	0 off, 1-255 Green dimmer	0 off, 1-255 Red dimmer
CH3	0 off, 1-255 Blue dimmer	0 off, 1-255 Green dimmer
CH4	0 off, 1-255 White dimmer	0 off, 1-255 Blue dimmer
CH5	0 off, 1-255 Yellow dimmer	0 off, 1-255 White dimmer
CH6	0 off, 1-255 UV dimmer	0 off, 1-255 Yellow dimmer
CH7		0 off, 1-255 UV dimmer
CH8		0-8 off, 9-255strobe (slow to fast)
CH9		0-8 off 9-49 mix color(10channel mixing color) 50-89 Discoloration mode (10channel adjust speed) 90-129 Catastrophe mode (10channel adjust speed) 130-199 Gradient model (10channel adjust speed) 200-219 controller sound control 1 220-239 controller sound control 2 240-255 controller sound control 3
CH10		0 off, 1-255Spped (slow to fast)

≡ SPECIFICATIONS



Light Sources	9x12W RGBWA+UV 6in1
LED Light Sources:	Tianxin
Power consumption:	90W
Power Voltage:	AC 100-240V, 50/60Hz
Beam Angle:	15°
Dimming:	32bit dimming, 4dimmers (1-4 from normal to fast)
DMX Channel:	6/10 Channel
Wireless Channels:	7channels (1-7 channels for option)
Control Mode:	DMX512, Wireless DMX, Master-Slave, IR Remote, Smart phone (customized)
Display:	OLED Display
Data In/Out socket:	IP65 3-pin XLR sockets
Power Socket:	IP65 Power con in/out
Battery life:	Full colors will run about 4-4.5 hours, and two colors will run about 12 hour
Net weight:	5.4kg
Dimension:	29CM*23CM*27CM

四 IRC Remote Functions



1. After changing the color / stroboscopic / gradient function keys, the upper and lower keys on the remote control can change the speed.
- 2, according to the voice control function keys, the upper and lower keys on the top of the remote control can change 3 voice control modes.
- 3, the 3 row of the remote control third key is "choose 32 mixed color" function keys, the upper and lower keys on the remote control can be mixed color.

五 WIRELESS CONTROL

- 1、LED DISPLAY
- 2、 126 frequency band without interference automatically selected to ensure communication reliability.
- 3、 7 groups of ID codes are settable, the user can use seven groups of separated wireless networks in one place without any interference.
- 4、 Communication distance Diameter: 500M (open area)
- 5、 Working frequency: 2.4G ISM, 126 full-band
- 6、 Maximum transmit power: 20dBm
- 7、 Receiver sensitivity: -94dBm

OPETATING INSTRUCTIONS:

- 1、 ID code and LED color corresponding relationship:
 - 1: RED.....RED
 - 2: GREEN.....GREEN
 - 3: RED+GREED.....YELLOW
 - 4: BLUE.....BLUE
 - 5: RED+BLUE.....PURPLE
 - 6: GREEN+BLUE.....CYAN
 - 7: RED+GREED+BLUE.....WHITE
- 2、 Press the button to display the current ID setting, and then you can do ID setting.
You press it one time, ID value will plus 1.
- 3、 Working status:
 - LED ON: NO DMX OR WIRELESS SIGNAL
 - RED LED FLASH: SENDING
 - GREEN LED FLASH: RECEIVING
- 4、 Radio frequency 2.400-2.525G, total is 126 frequency bands, they will be selected automatically without setting.
- 5、 ID codes "1-7" groups of ID codes, press “frequency” to adjust them. Only the transceivers with the same ID codes can be communicated with each other.

ESTABLISHMENT OF COMMUNICATION:

- 1、 The transceivers are electrified.
- 2、 Press "frequency" to set the transceivers which are needed to be communicated to the same ID. If you want to use more than one group of wireless network in one place, the ID codes should be different for each network.
- 3、 When the transceivers receive DMX signal they will select frequency without interference to send data and red LED will flash. The receivers will change the communication bands upward until it receives correct data with the same ID code and the green LED will flash, DMX data changed faster, the LED flash faster.
- 4、 Then the communication will be established.

六 2.4G WIFI CONTROL BY BOTH IOS AND ANDROID SYSTEM MOBILE PHONE



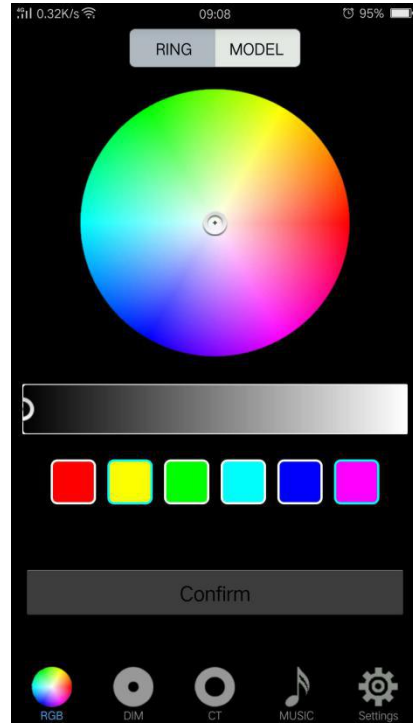
Use your phone to scan and download

The app automatically recognizes your language

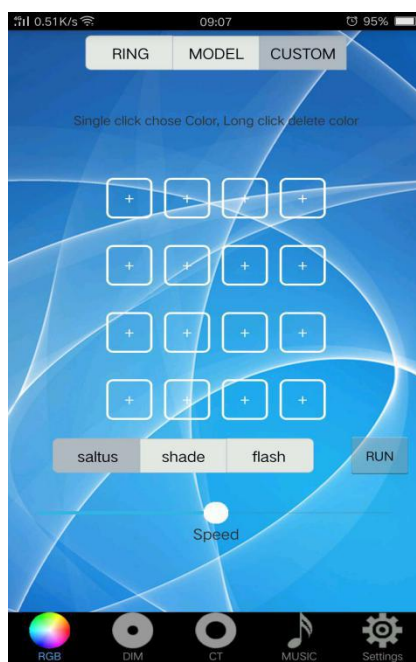
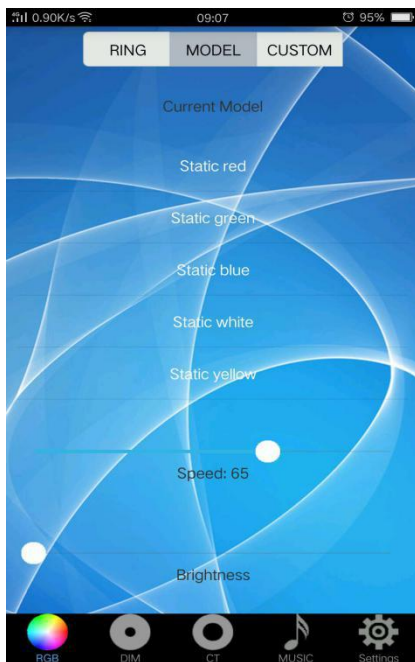
On "User Settings" screen, press Enter and move the Up/Down key to select "Wi-Fi" (Wi-Fi mode). Press Enter. There will be a Wi-Fi icon, indicating that the Wi-Fi module is activated.

Then, you may proceed to connect your phone. Open the Settings of your phone and find the wireless network WLAN accesses. The device to be connected to is shown as led_xxx.as. See the picture

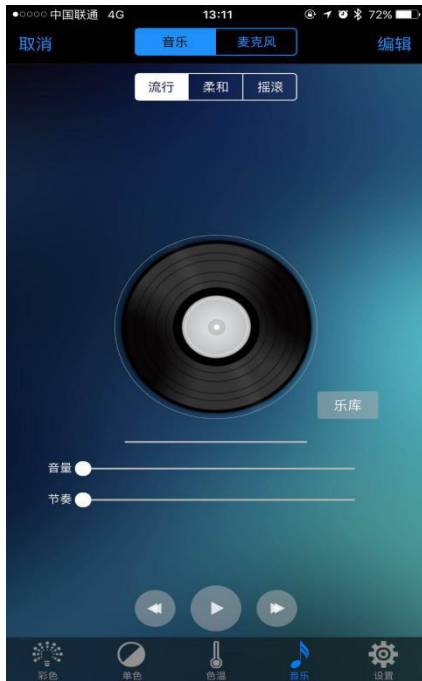




Long Press +



Add music, according to the song melody color mode



Add router timing control

