

# LED-6-PAP



**SMART DJ 6x18w RGBWA UV 6in1 wireless DMXLED UPLIGHT**

**Please read over this manual before operating the light**

**Most important: FIRST CHARGE THE FIXTURES FOR 6-8 Hours on the First Charge before use. Plug in Power cord. Turn off Power Switch and Turn off other switch to charge.**

#### **Introduction**

**Unpacking:** Thank you for purchasing this product, all products has been thoroughly tested and has been shipped in perfect operating condition. Carefully check the shipping carton for damage that may have occurred during shipping. If the carton appears to be damaged, carefully inspect your fixture for any damage and be sure all accessories necessary to operate the unit has arrived intact. In the case damage has been found or parts are missing, please contact the manufacturer or your dealer for further instructions. Do not return this unit to your dealer without first contacting.

**Introduction:** The Light is a DMX intelligent and battery powered LED par light. This par light is light weight and compact which makes it a great piece for mobile DJ"s and clubs.

**Warning!** To prevent or reduce the risk of electrical shock or fire, do not expose this unit to rain or moisture.

**Caution!** There are no user serviceable parts inside this unit. Do not attempt any repairs yourself; doing so will void your manufactures warranty. In the unlikely event your unit may require service please contact the manufacturer or your dealer.

**PLEASE recycle the shipping carton whenever possible.**

#### **General Instructions**

To optimize the performance of this product, please read these operating instructions carefully to familiarize you with the basic operations of this unit. These instructions contain important safety information regarding the use and maintenance of this unit. Please keep this manual with the unit, for future reference.

**Notice :**please pay attention to ventilation, to prevent the battery overheat cause burning When charging.



# 1. Notes

**Please carefully read the instructions, it contains assembly, operation, maintenance and other important information.**

Circuit board may not overlap pile, please put gently, not abandonment, to prevent deformation of the circuit board, component damage, pads off and other adverse conditions.

Power input range between 12-36V, different light board power input will vary, please counsel before use, avoid the use of improper power supply or motherboard situation

burned lamp beads, resulting in unnecessary economic losses. Do not reverse the anode and cathode power supply.

It should take PCB board when assemble and install, do not covet convenience of lifting and operating for a part, to avoid pad off or damage as stress .

All terminals should be connected correctly and according to process requirements. Pay attention to distinguish the direction and polarity

Try not to plug any electrical or cable to operate, to avoid short circuit or component damage.

Try to make anti-static treatment.

Operating errors or other man-made defects or burned are not within the scope of return, need to charge repair costs of corresponding elements.

# 2. Product Features

DMX512 console control, can be controlled via signal cable and 2.4G wireless DMX signal

Master-slave control is available online via the signal line or 2.4G wireless

WiFi phone operation control, support Android 2.3 or later, Apple iOS 4.3 or later (This feature applies to WiFi motherboard)

Phone APP Name: LED WIFI (Language: software automatically recognizes the Chinese or English according to the system)

Static color choices (6 colors, dimming 0-255) + strobe function (speed adjustable 0-20)

Macro Color: 32 colors available

Color automatically change function (Speed 1-20)

Color gradually change function (Speed 1-20)

Color Suddenly change function (Speed 1-20)

Strobe with red background, strobe with a green background, strobe with blue background, Strobe with a yellow background (Speed 1-20)

3 kinds of sound active function (Suddenly change、 Suddenly change+Gradually change、 Strobe) + Sound sensitivity(0-100), can be controlled via Menu and IR remote. 2.4G wireless electronic switch, can be turned on or off its power via the menu, there is to know whether open or closed wireless module through the upper left corner icon

WiFi module electronic switch, can be turned on or off its power via the menu, there is to know whether open or closed WiFi module through the upper left corner icon

Balance settings, make appropriate adjustment brightness of 6 colors (also

has fine-turn current function) , value is (127-255)

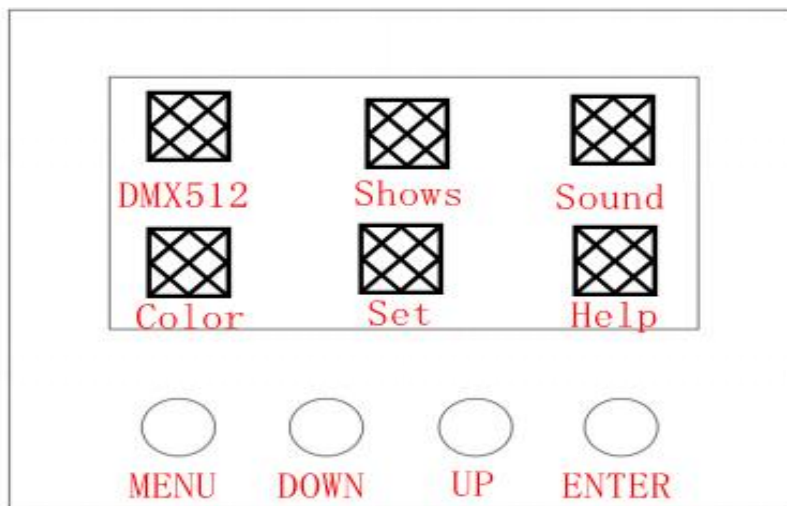
Top right corner of the LCD display is battery icon, can be set on or off icons appear, if product without battery, can be set off.

Screen-savers setting: can be set as normally open or turn off the display back-light after 5 seconds, 10 seconds, 15 seconds after turning off the display back-light.

Button automatically lock: can turn on or off through the menu settings

Infrared remote control feature set: can be turned on or off through the menu settings

## — OPERATING INSTRUCTIONS...SKEMATIC DIAGRAM



|               |   |
|---------------|---|
| <b>MENU</b>   | Main Menu Function Selects / exits the submenu            |
| <b>▲ UP</b>   | Selects the previous menu / parameter increment           |
| <b>▼ DOWN</b> | Selects the next menu / parameter decrement               |
| <b>ENTER</b>  | Confirm the selected function / Go to the next menu level |

## Menu Display:

|               |  |
|---------------|--|
| <b>DMX512</b> | DMX512 international general signal control, use UP and DOWN to adjust address code.   |
| <b>Shows</b>  | <ul style="list-style-type: none"><li>● Auto Color :Colorful color jump changing of auto running, use up and down to adjust speed of the fastest auto running, 1 is the slowest.</li><li>● Auto Fade: Gradual magic changing of auto running, use up and down to adjust speed of the auto running.</li><li>● Auto Sudden: Colorful color pulse changing of auto running, use up and down to adjust speed of the auto running.</li><li>● Auto Strobe: flash control (0-99)</li><li>● Wi-Fi Mode APP: Press the Enter key, then you can turn on WIFI</li></ul> |
| <b>Sound</b>  | <ul style="list-style-type: none"><li>● Sound Mode1</li><li>● Sound Mode2</li><li>● Sound Mode3</li><li>● Sound Mode4</li></ul> <p>Sound activated mode, use up and down to adjust sensitivity of sound activated. 100 is the highest sensitivity, 1 is the lowest sensitivity.</p>  |
| <b>Color</b>  | <ul style="list-style-type: none"><li>● Custom Color</li><li>● Static Color</li></ul>  |

|             |  |
|-------------|--|
| <b>Set</b>  | <ul style="list-style-type: none"> <li>● DMX channel6CH/10CH</li> <li>● 2.4g wireless ON/OFF</li> <li>● Infrared ON/OFF</li> <li>● Display backlight LCD0-100%</li> <li>● LCD Close time LCD ON/OFF</li> <li>● Open5S,10S,15S,30S.</li> <li>● Restore factory 8888</li> <li>● MANUAL 6666</li> <li>● Temperature ON/OFF</li> <li>● Battery ON/OFF</li> <li>● Background Color LCD</li> </ul> |
| <b>Help</b> | <ul style="list-style-type: none"> <li>● Name: 6 Color</li> <li>● Version:V4.0</li> <li>● DMX Channel</li> <li>● Run Time</li> <li>● User Time</li> <li>● Temperature</li> </ul>   |

## DMX 512 Channel List

### 6CH Mode:

| Channel | Address | Function      |
|---------|---------|---------------|
| 1       | 0~255   | Red dimming   |
| 2       | 0~255   | Green dimming |
| 3       | 0~255   | Blue dimming  |
| 4       | 0~255   | White dimming |
| 5       | 0~255   | Amber dimming |
| 6       | 0~255   | UV dimming    |

## 10CH Mode:

| Channel | Address | Function   |
|---------|---------|--|
| 1       | 0~255   | Dimming,channel 9(0~9)   |
| 2       | 0~255   | Red, the maximum value determined by the total dimming   |
| 3       | 0~255   | Green, the maximum value determined by the total dimming   |
| 4       | 0~255   | Blue, the maximum value determined by the total dimming  |
| 5       | 0~255   | White, the maximum value determined by the total dimming   |
| 6       | 0~255   | Amber, the maximum value determined by the total dimming   |
| 7       | 0~255   | UV, the maximum value determined by the total dimming  |
| 8       | 0~255   | Function Speed   |
| 9       | 0~8     | 0-8 closed light   |
|         | 170~209 | Sound activated  |
|         | 210~239 | Sound pulse + strobe   |
|         | 240~255 | Sound strobe   |
| 10      | 0~255   | The function of this channel depends on the value of channel 9:<br>When channel 9 is between 10 and 49, this channel is used to select the color<br>When the 9th channel in 101 ~ 250 (jump, gradient, mutation), then the channel control speed: 0 the slowest, 255 fastest |

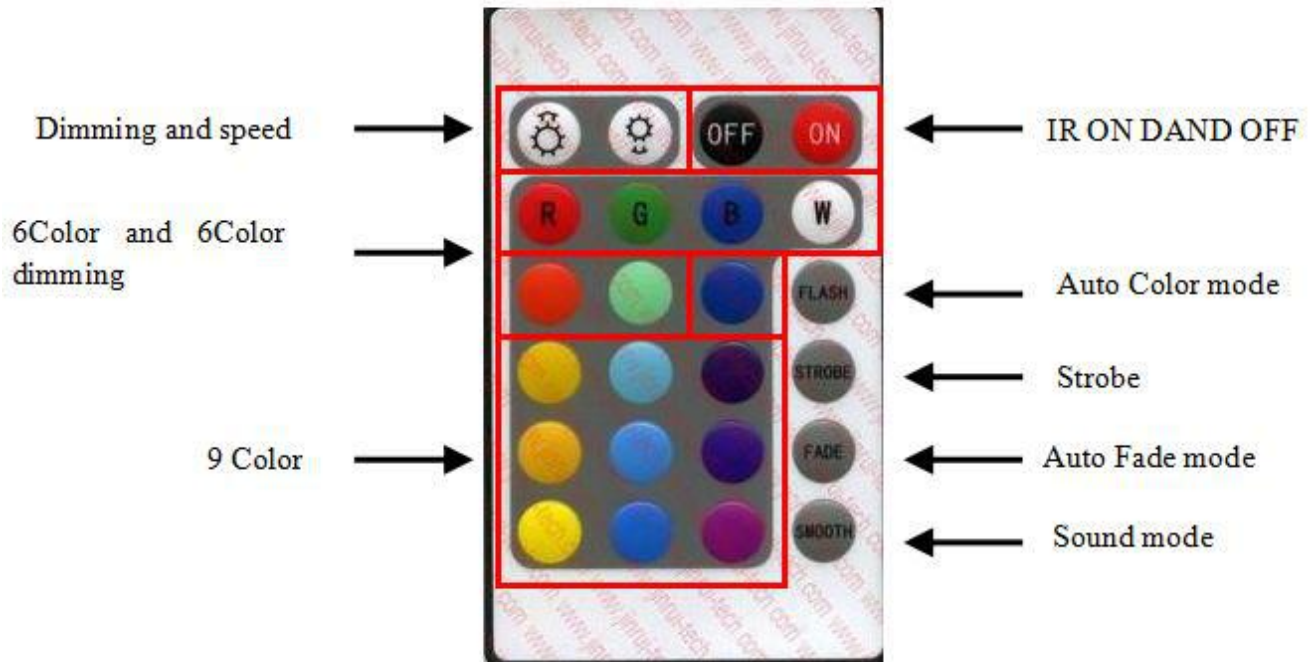
## 三 SPECIFICATIONS



- Voltage: AC90-245V, 50/60HZ
- IP Rate: IP44
- Light source: 6\*18W 6-IN-1 LED s
- LED life time: 100000 hours
- High-effect environmental protection Lithium battery module, battery charging time: 6 hours
- Battery working time: 10 hours
- Net weight: 2.6kg
- Dimension: 21.5CM\*21.5CM\*25.5CM
- Beam angle: 25°45°

## 四 IRC Remote Functions





## 五 WIRELESS CONTROL

- 1、 LED DISPLAY
- 2、 126 frequency band without interference automatically selected to ensure communication reliability.
- 3、 7 groups of ID codes are settable, the user can use seven groups of separated wireless networks in one place without any interference.
- 4、 Communication distance Diameter: 500M (open area)
- 5、 Working frequency: 2.4G ISM, 126 full-band
- 6、 Maximum transmit power: 20dBm
- 7、 Receiver sensitivity: -94dBm

### OPETATING INSTRUCTIONS:

- 1、 ID code and LED color corresponding relationship:
  - 1: RED.....RED
  - 2: GREEN.....GREEN
  - 3: RED+GREED.....YELLOW
  - 4: BLUE.....BLUE
  - 5: RED+BLUE.....PURPLE
  - 6: GREEN+BLUE.....CYAN
  - 7: RED+GREED+BLUE.....WHITE
- 2、 Press the button to display the current ID setting, and then you can do ID setting. You press it one time, ID value will plus 1.

- 3、 Working status:
  - LED ON: NO DMX OR WIRELESS SIGNAL
  - RED LED FLASH: SENDING
  - GREEN LED FLASH: RECEIVING
- 4、 Radio frequency ..... 2.400-2.525G, total is 126 frequency bands, they will be selected automatically without setting.
- 5、 ID codes ..... "1-7" groups of ID codes, press “frequency” to adjust them. Only the transceivers with the same ID codes can be communicated with each other.

#### **ESTABLISHMENT OF COMMUNICATION:**

- 1、 The transceivers are electrified.
- 2、 Press "frequency" to set the transceivers which are needed to be communicated to the same ID. If you want to use more than one group of wireless network in one place, the ID codes should be different for each network.
- 3、 When the transceivers receive DMX signal they will select frequency without interference to send data and red LED will flash. The receivers will change the communication bands upward until it receives correct data with the same ID code and the green LED will flash, DMX data changed faster, the LED flash faster.
- 4、 Then the communication will be established.

## **六 2.4G WIFI CONTROL BY BOTH IOS AND ANDROID SYSTEM MOBILE PHONE**



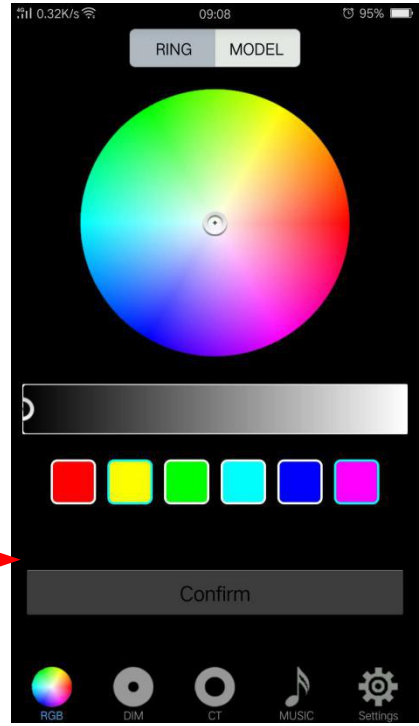
Use your phone to scan and download

The app automatically recognizes your language

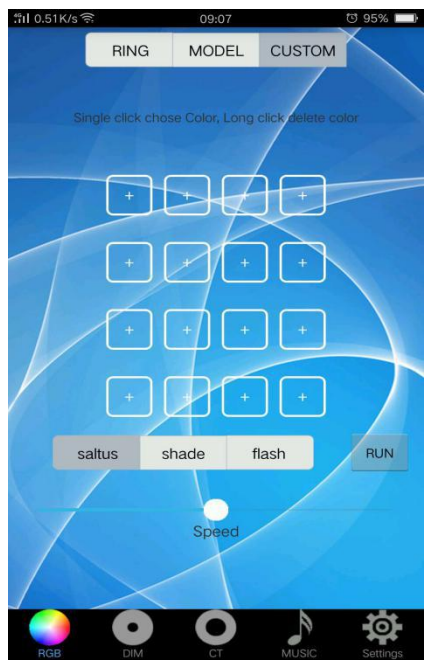
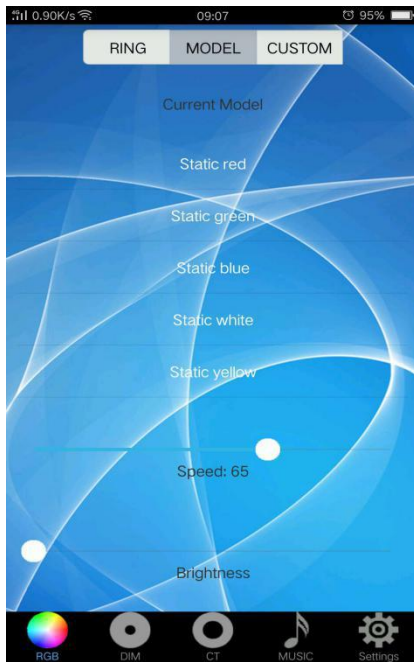
On "User Settings" screen, press Enter and move the Up/Down key to select "Wi-Fi" (Wi-Fi mode). Press Enter. There will be a Wi-Fi icon, indicating that the Wi-Fi module is activated.

Then, you may proceed to connect your phone. Open the Settings of your phone and find the wireless network WLAN accesses. The device to be connected to is shown as led\_xxx.as. See the picture





Long Press +



Add music, according to the song melody color mode



Add router timing control